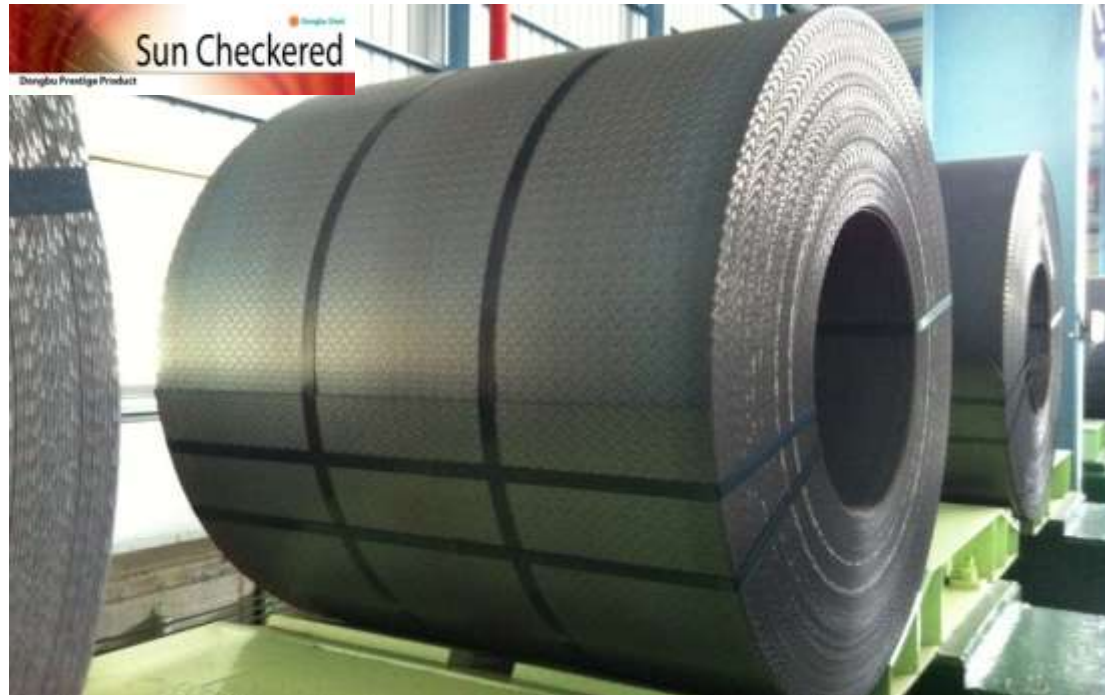


# Introduction of Sun Checkered



**Hot Rolling Products Sales Business Unit**

**Dongbu Prestige Product**

Dongbu Steel's advanced electric arc furnace steel mill opens up the prestige era of steel products!

Dongbu Steel leads the prestige era of steel products through its world largest electric arc furnace steel mill that reduces CO<sub>2</sub> by 1/3 and energy consumption by 1/3 compared to the current blast furnace.

**[Dongbu Prestige Product]**

**Sun Checkered**  
Hot rolled checkered plate  
Maximized slip-resistant function with optimal design.  
\*Use: Building floors for slip-resistance, ship deck, truck cargo box, etc.

**Printech**  
High quality color printed plate  
Wide range of color and flexible quality designed patterns.  
\*Use: Interiors of panels for construction, various electronic products, etc.

**ALCOT**  
Hot dip aluminum coated plate  
Excellent heat resistance, heat reflection and corrosion resistance.  
\*Use: Heat-resisting products for boiler, heat exchanger, gas range, etc.

**Dongbu Steel**

- 1) Dongbu Steel's Brand name of Checkered Plate.
- 2) Appointed as one of three Dongbu Prestige Products.
- 3) Premium quality control & Differentiated Customer Service



[Color coil tag]

1



**Excellent Flatness (1/2 JIS standard)**

**Ultra Thin Gauge (Min 1.8mm thickness)**

2



**Ultimately clear shape**

**Accurately equal in pattern's shape and size**

3



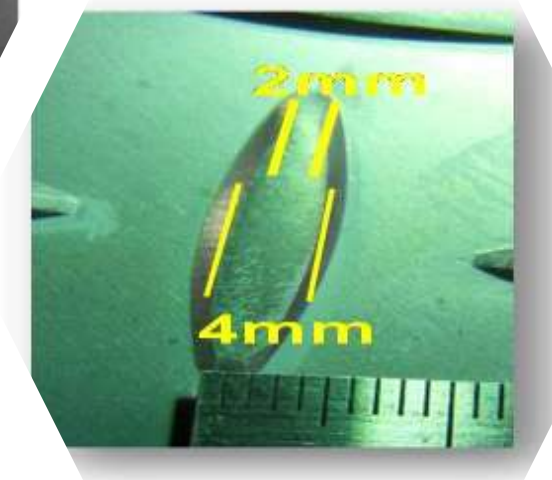
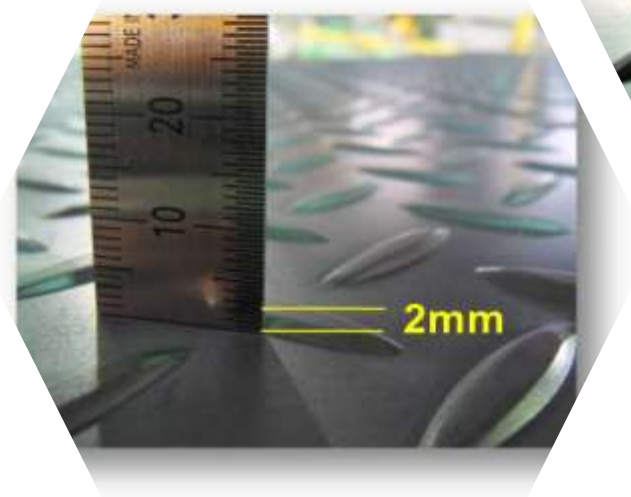
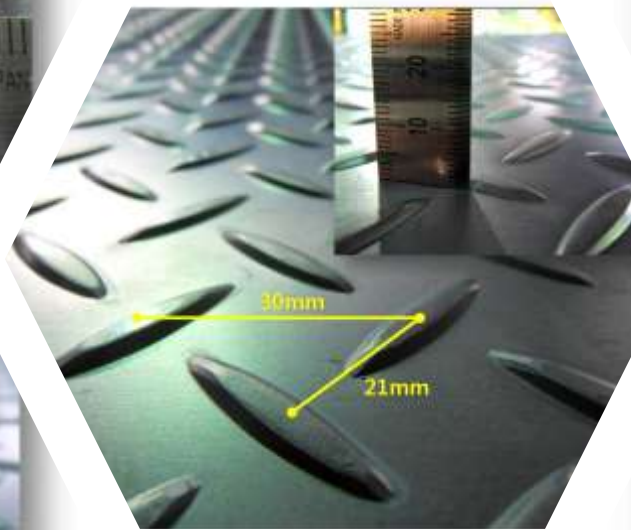
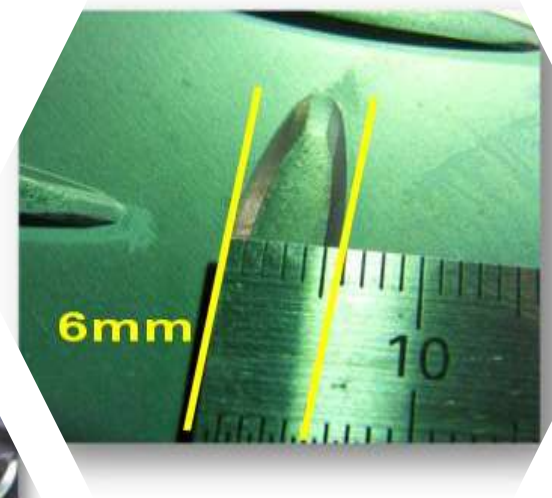
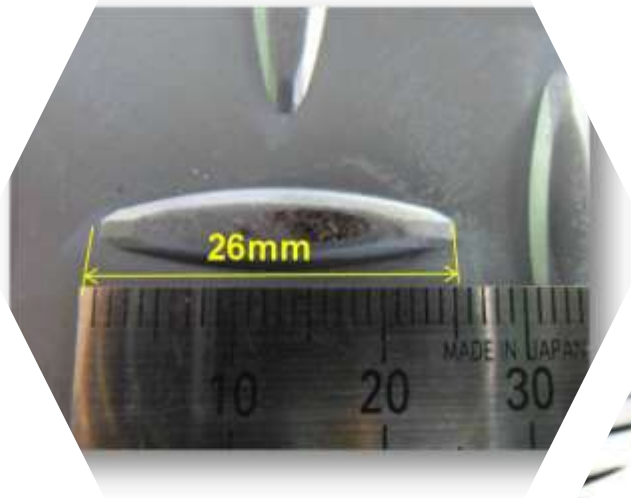
**Optimized design for the most efficient slip-proof**

**by the best specialist**

**(in pattern's shape & distance)**

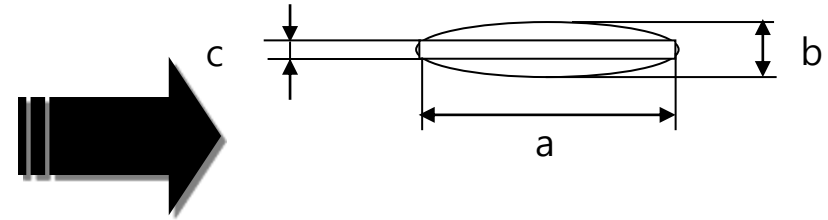
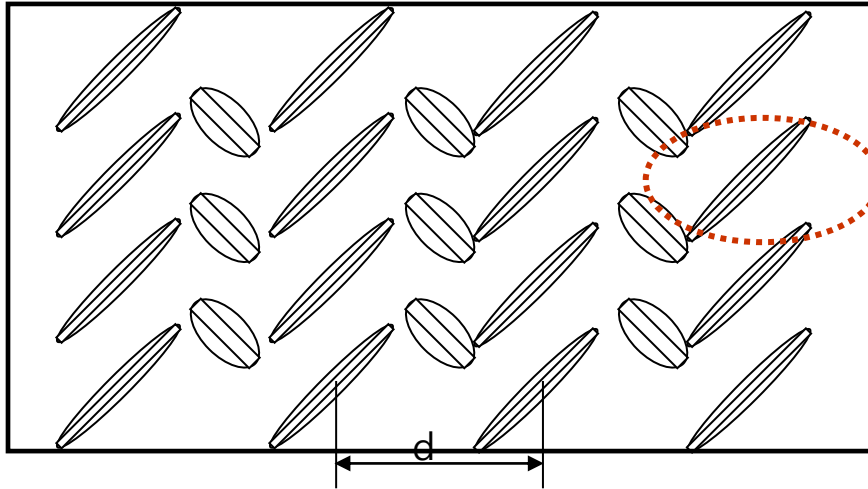
# 2-2. Sun Checkered Dimension.1

Strictly Confidential



## 2-3. Sun Checkered Dimension.2

Strictly Confidential



\* Distance(d) can be a bit adjusted acc.to size

Maker	dimension					Coil Spec.	
	Length (a)	Total Width (b)	Center Width (c)	Distance (d)	Height (e)	Thickness	Width
Dongbu	26	6.0	2.0	30	~ 2.0	1.8~11.0	1000~1524
Other	29	7.3	2.5	37	~ 2.0	2.~8.0	914~1524

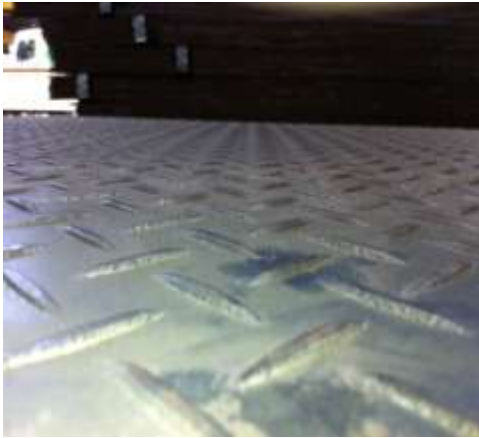
### 1. Superior quality in slip-resistant function

- Densely designed pattern helps slip-resistance : refer to (d) in the table
- **Appropriate** sharp edge(narrow center width) & height improve the frictional force : refer to (b) (c) (e) in the table

### 2. Design for excellent drainage

## 2-4. Sun Checkered Comparison to others

Strictly Confidential



Chinese



Russia



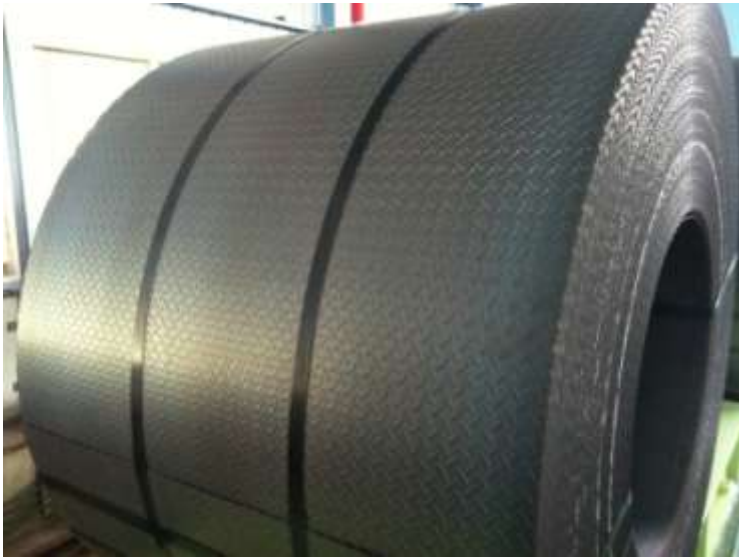
America



Taiwan

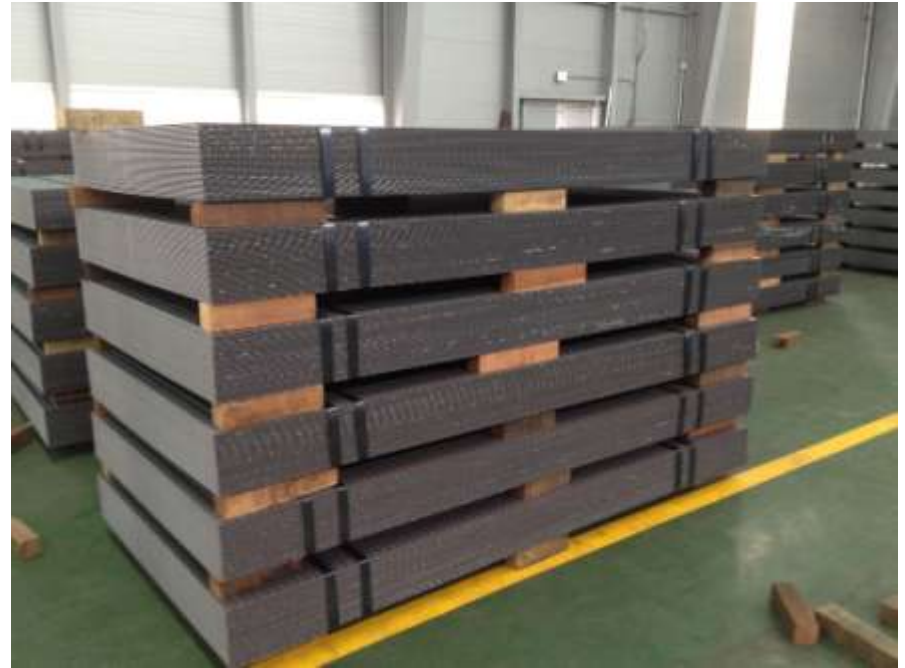
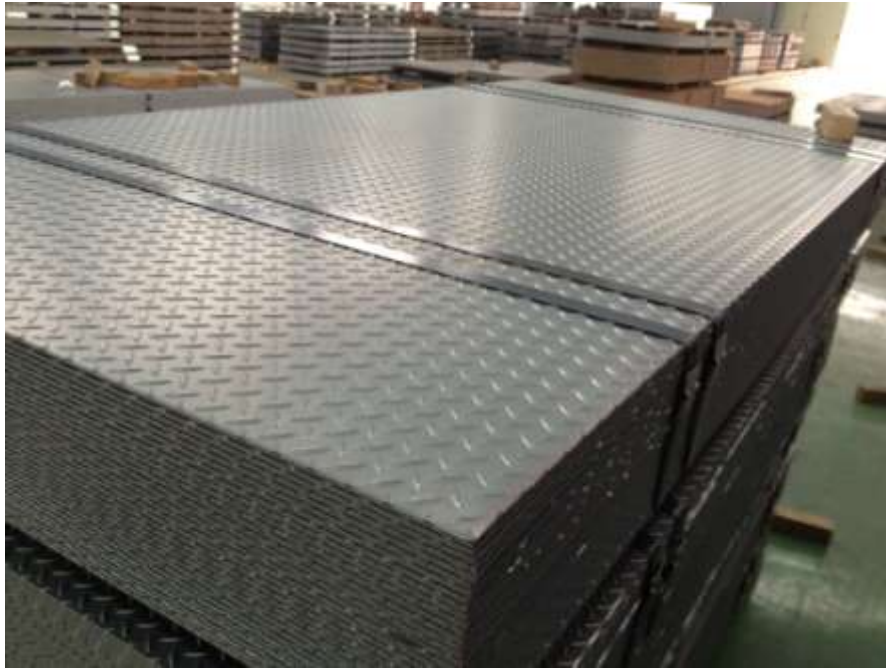
## 2-5. Sun Checkered Finished Products

Strictly Confidential



## 2-5. Sun Checkered Finished Products

Strictly Confidential







1

Free Defects Control in Dongbu steel Dangjin Works/Hot Rolling Mill.

2

Quick Delivery System

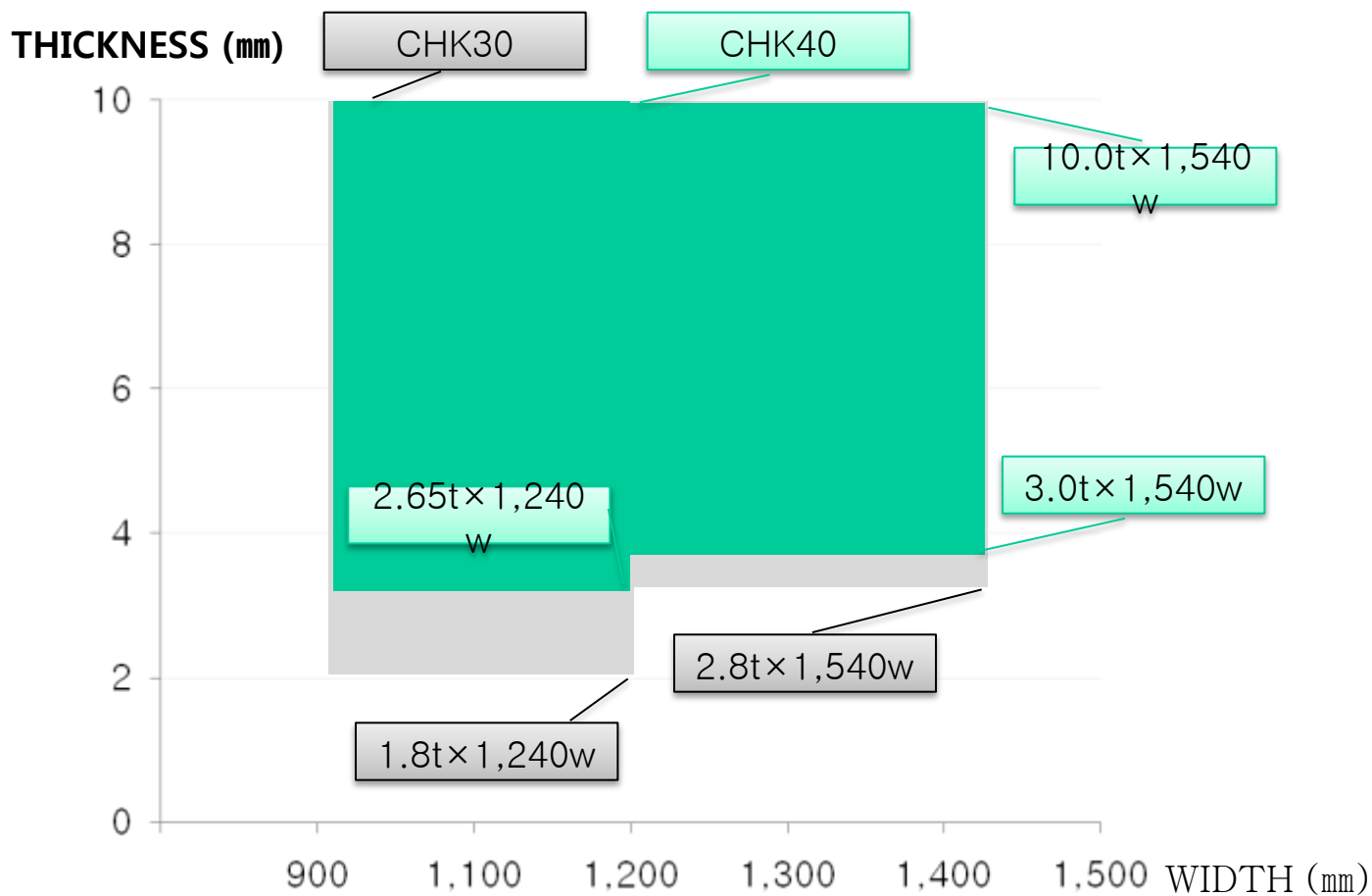
3

Sun Checkered Team's Technical Support in every Quarter

# 3-1. Production Range

Strictly Confidential

- CHK 30 : SPHC, CHECK 40:SS400
- S235JR, S275JR AVAILABLE



## 3-2. Thickness & Width Tolerance

Strictly Confidential

### SIZE TOLERANCE

구분	THICKNESS (mm)		WIDTH (mm)		TOLERANCE (mm)			
	ABOVE	BELOW	ABOVE	BELOW	EDGE	TOLERANCE	EDGE	TOLERANCE
THICKNESS	1.8	2.0	850	1,650.1	M	-0.10	M	0.10
	2.0	3.0	850	1,650.1	M	-0.11	M	0.11
	3.0	5.0	850	1,650.1	M	-0.13	M	0.13
	5.0	7.0	850	1,650.1	M	-0.15	M	0.15
	7.0	10.0	850	1,650.1	M	-0.18	M	0.18
WIDTH	1.8	10.0	850	1,350.1	M	0	M	15
	1.8	10.0	1350.1	1,650.1	M	0	M	20

### 3-3. Packing Type

Strictly Confidential

EXPORT

DOMESTIC



ID : 765 mm  
OD: Max. 2,100 mm  
COIL WT : Max. 18 ton